



Bathing establishment Fact Sheet

Bathhouse name	IPPOCAMPO
Address	Via delle Gorette n. 1
City	Marina di Cecina (LI)
Contacts	+39 0586 622586 nfo@bagnoippocampo.it
Website	https://www.bagnoippocampo.it/

TESTED BY: [Handy Superabile - Social Promotion Association](#) in summer 2023

Please note The following information refers to the verification date shown at the bottom of each card. **The Association** is not responsible for any significant changes made by the property after the visit.

Summary

Bathing establishment Fact Sheet.....	1
Arrival at the facility	2
Private/public parking.....	2
Pathway from the parking lot to the main entrance	2
Reception.....	3
Bar/restaurant	4
Internal Pathways and common services	5
Internal Pathways.....	5
Toilet and shower accessible to guests with reduced mobility.....	5
Changing room.....	8
Beach.....	9
Children's play area.....	10
Swimming pool.....	11
Doctors' Offices/Healthcare Facilities	11

Project carried out with the contribution of the





Arrival at the facility

Private/public parking

Presence of private parking	YES
Type of private car park	gravel
Presence of parking space reserved for people with disabilities	NO
Public parking nearby	YES
Type of public car park	asphalt



Pathway from the parking lot to the main entrance

Pathway from the car park to the entrance	by ramp length 285 cm, width 225 cm, slope 3.3%
There are markers and tactile maps	NO
Usable door/entrance width	more than 90 cm





Reception

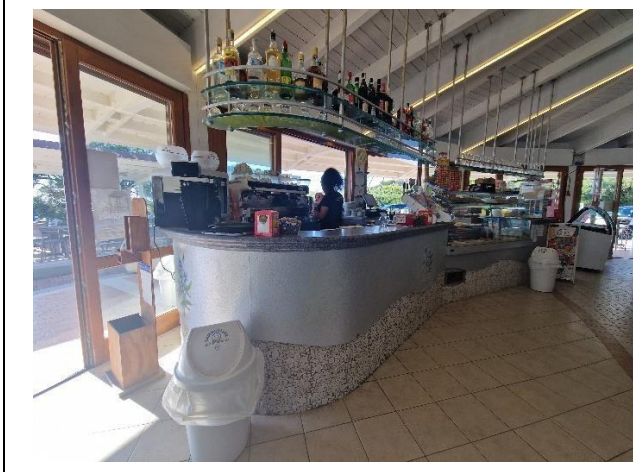
Umbrella booking system	<input checked="" type="checkbox"/> Via web <input checked="" type="checkbox"/> By phone <input checked="" type="checkbox"/> On-site
Presence of multilingual staff	YES
Presence of plant plan with key to services available	YES
Presence of visuo-tactile map	NO
Bulletin board/information panels at an average height of 130 cm in a well-lit area and font size at least 14 dpi with a contrast ratio greater than 4.5:1	YES
The staff attended training courses on welcoming people with different disabilities	NO





Bar/restaurant

Type of venue	Snack bar and refreshment point
Access to the premises	Flat
Usable door/entrance width	cm 85
Bar counter	more than 100 cm
Types of tables	4- legged and with central support
Space underneath the tables from the floor	more than 70 cm
Multilingual menu	YES
Menus with large print fonts	NO
Braille menu	NO
Table service for people with disabilities	YES
Availability of gluten-free food	<input type="checkbox"/> bread <input checked="" type="checkbox"/> pasta <input checked="" type="checkbox"/> biscuits <input checked="" type="checkbox"/> ice cream <input type="checkbox"/> Pre-packaged foods





Internal Pathways and common services

Internal Pathways

<p>Indicate whether the pathways connecting the entrance to the beach are flat or with ramps in addition to those already described</p>	<p>Obstacle-free paths</p>



Toilet and shower accessible to guests with reduced mobility

<p>Number of outdoor toilets accessible/usable by guests with reduced mobility</p>	<p>2</p>
<p>Access to the premises</p>	<p>by ramp length 219 cm, width 611 cm, gradient 4.5 %</p>
<p>Usable width of the entrance door</p>	<p>89 cm</p>
<p>Toilet height</p>	<p>52 cm</p>
<p>Open front toilet seat</p>	<p>YES</p>
<p>Support handles</p>	<p>on both sides</p>
<p>Flexible hand shower at the side of the toilet</p>	<p>NO</p>
<p>Free space on the sides of the toilet</p>	<p>left 74 cm</p>

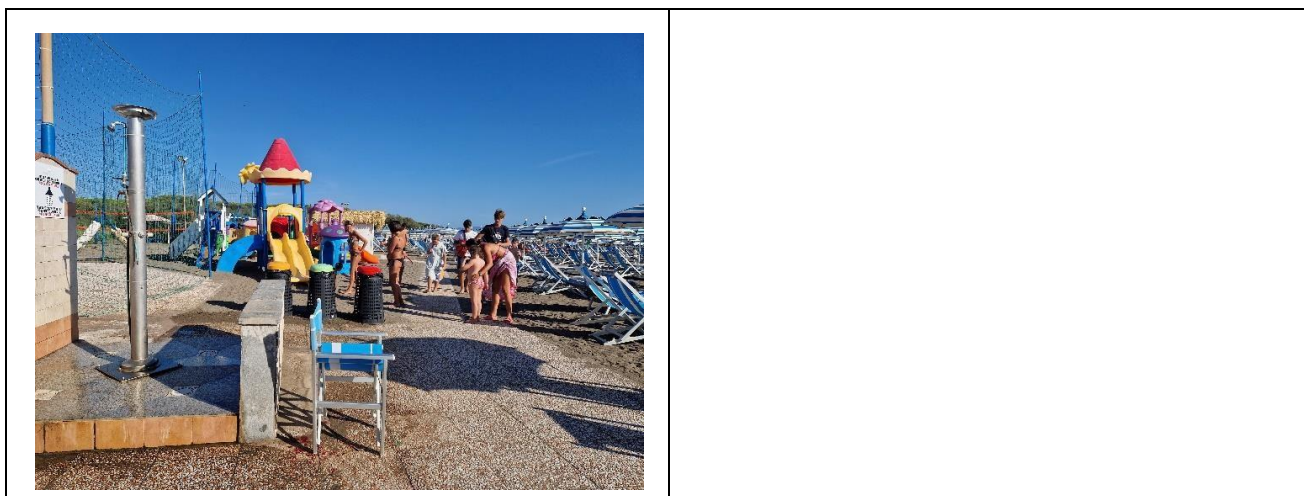
Project carried out with the contribution of the





	right higher than 20 cm frontal more than 90 cm
Electric doorbell/phone	YES
Washbasin with space underneath for wheelchair	69 cm
Height from the ground on the bottom edge of the mirror	118 cm
Baby changing table	NO
	
Accessible shower available for guests with reduced mobility	YES shared with the outdoor toilet room
Access to the shower room if separated from the toilet room	by ramp length 219 cm, width 611 cm, gradient 4.5 %
Useful width of the door/entrance gate if separated from the toilet room	89 cm
Shower type	with sliding curtain
Floor-level shower	YES
Shower chair	wall-mounted folding
Grab bar	YES
Presence of shower head or ups and downs	fixed shower head
Electric doorbell/phone	NO
Outdoor shower available	Accessible via a 13 cm high step





Number of internal toilets accessible/usable by guests with reduced mobility	1
Access to the premises	Flat
Usable width of the entrance door	more than 90 cm
Toilet height	49 cm
Toilet seat with open front tooth	YES
Support handles	Missing
Flexible hand shower at the side of the toilet	NO
Free space on the sides of the toilet	left more than 90 cm right 22 cm frontal more than 90 cm
Electric doorbell/phone	YES
Washbasin with space underneath for wheelchair storage	75 cm
Height from the ground on the bottom edge of the mirror	Missing mirror
Baby changing table	NO





Changing room

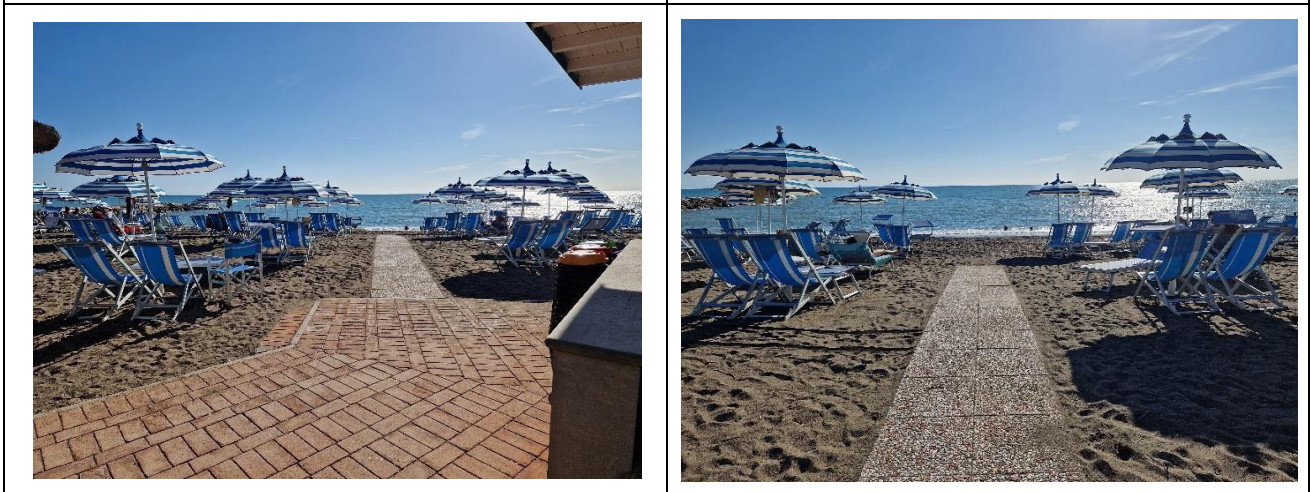
Accessible changing room available for guests with reduced mobility	YES, shared with the outdoor toilets
Access to the premises	Flat
Usable door/entrance width	89 cm
Size of the dressing room	width 180 cm and depth 196 cm
Presence of a cot	NO
Coat rack height from the ground	over 140 cm and not accessible to wheelchair users





Beach

Type of beach	sand
Access to the beach	by ramp length 611 cm, width 219 cm, gradient 4.5 % and subsequent ramp with a slight slope
Walkway to reach the umbrellas	YES
Type of walkway	cement
Walkway width	100 cm



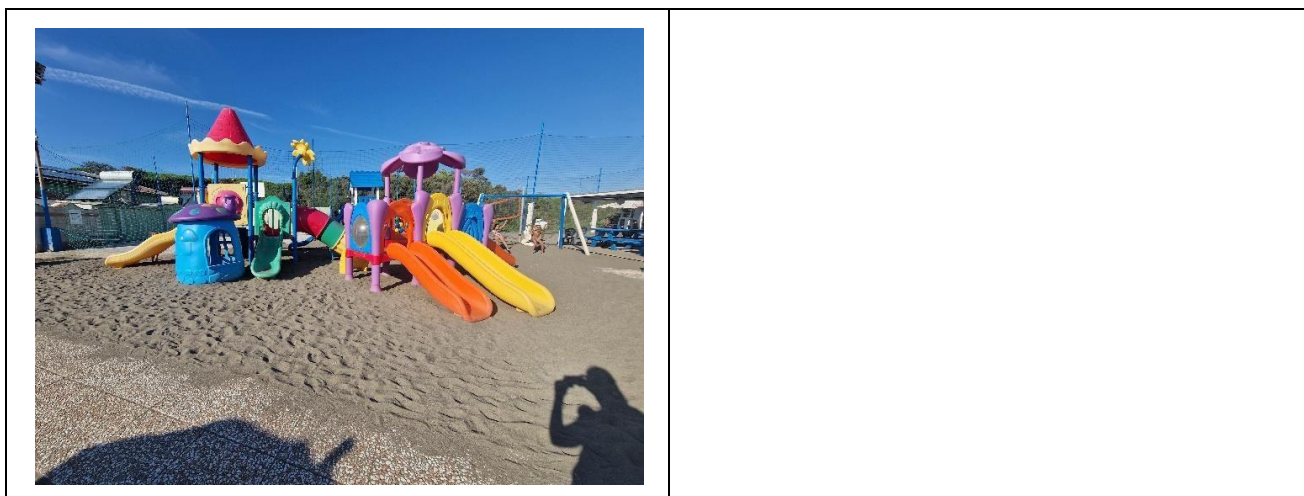


Removable Platform between the walkway and the umbrella station to facilitate the passage and parking wheelchair	YES
Amphibious beach chair available for helping people with reduced mobility to enjoy swimming (owned by the establishment or by association)	YES
	

Children's play area

Children's play area	inaccessible to children with reduced mobility due to sandy bottom
There are games for children with reduced mobility	NO





Swimming pool

The property has a swimming pool	NO
----------------------------------	----

Doctors' Offices/Healthcare Facilities

Hospitals near the facility	Ospedale di Cecina Via Montanara, n. 52 B, 57023 Cecina LI – 0586614111
Other Healthcare Facilities	Tourist medical service Viale Galliano Marina di Cecina Tel. 0586611666 (h. 20-8)

TESTED BY: **Handy Superabile Social Promotion Association in summer 2023**

